

Leadville Mine Remediation Program

17 July 2024

The NSW Government is commencing remediation work at the historic Leadville Mine in the state's Central West.

What are we doing?

Remediation work will help to improve safety and reduce impacts on the surrounding environment from past mining activity.

Key sources of contamination will be removed or minimised through drainage diversions while residual contamination will be fenced off to prevent future access.

The work will involve:

- excavating key areas of contaminated soil, which will be backfilled with onsite material
- fencing
- drainage improvements to control surface water and improve longevity of the remediation work
- revegetation of final landforms, including residual contamination areas.

When and where will we be working?

We will be working between **7 am and 6 pm Monday to Friday** from **Wednesday 30 September** for approximately 12 weeks, weather permitting.

We will let you know in advance if we need to do any work outside these times. All work activities and dates are subject to weather and site conditions.

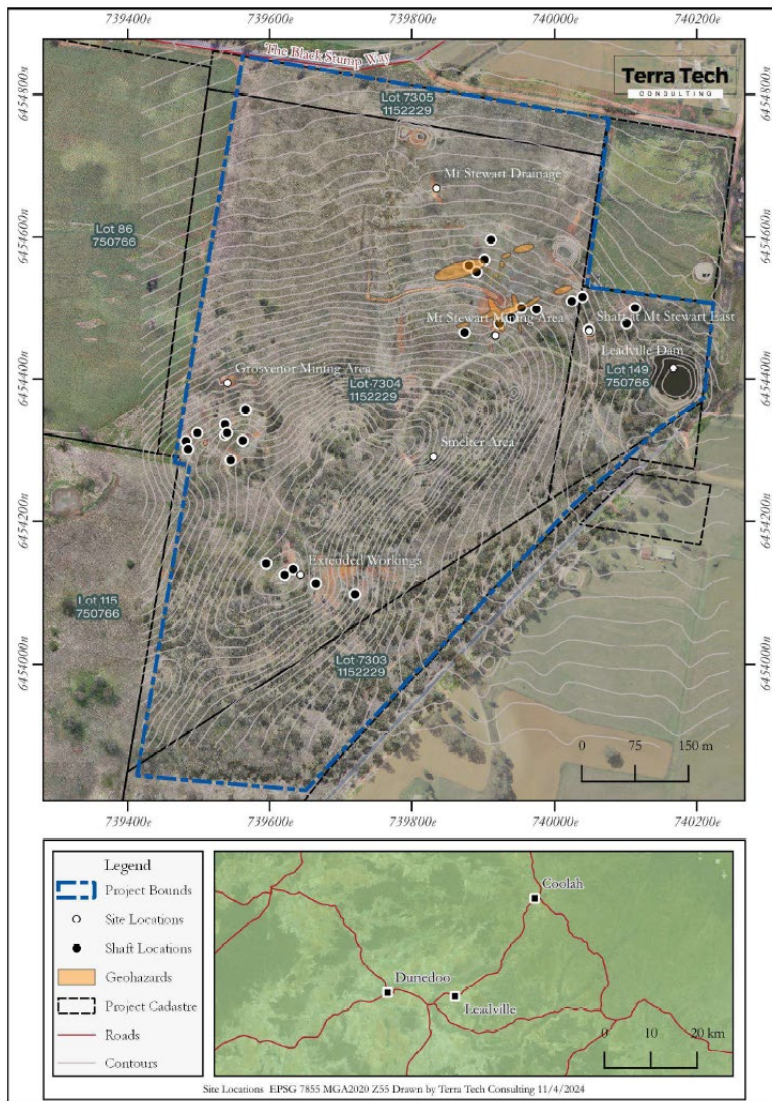
Managing our impact

We aim to manage our work to minimise impact to the community and the environment. The work will involve the use of machinery which generates some noise. We will make every effort to minimise noise by turning off machinery and vehicles when not in use.

Contact

If you have any Leadville Mine Remediation project questions, please contact our project team on ross.davis@regional.nsw.gov.au.

Location of work



Contact us



1300 679 673



legacy.mines@regional.nsw.gov.au



www.resourcesregulator.nsw.gov.au/leadville