

## Week ending 17 October 2018

This incident summary provides information on reportable incidents and safety advice for the NSW mining industry. To report an incident to the NSW Resources Regulator: phone 1300 814 609 24 hours a day, 7 days a week.

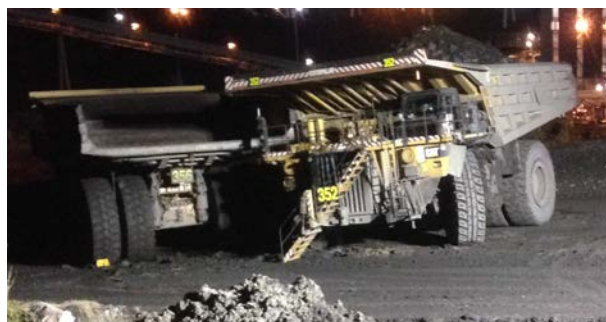
### At a glance

High level summary of emerging trends and our recommendations to operators.

Type	Number
Reportable incident total	47
Summarised incident total	2

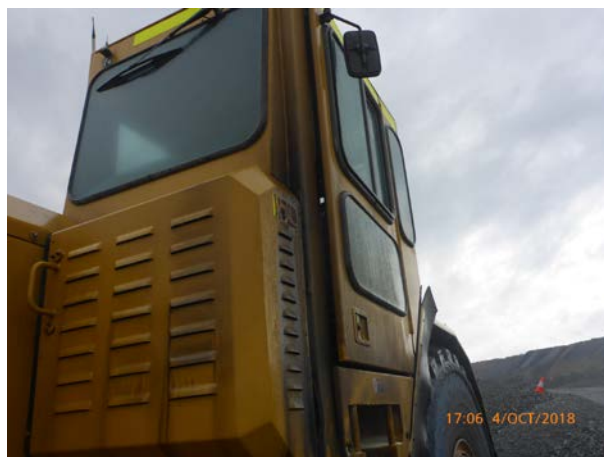
### Summarised incidents

Incident type	Summary	Recommendations to industry
High potential incident SinNot-2018/01693	<p>A collision occurred between two dump trucks while they were operating in wet conditions. An unloaded truck was descending a ramp from the ROM pad and another truck had stopped after losing traction and sliding on the ramp. The unloaded truck also lost traction and slid, rotated and stopped adjacent to the stationary truck. The stationary truck then recommenced climbing the ramp but again lost traction and slid, hitting the unloaded truck. The truck operators did not communicate with each other before moving away.</p>	<p>Mines must create an environment where operators and supervisors are able to stop work when conditions are unsafe to continue operating. When conditions become unsafe, operators and supervisors must be challenged as to why they have not stopped.</p> <p>The risks of wet weather operations are well known. Operators and supervisors must be trained in relevant procedures.</p> <p>Equipment operators should not proceed without clear communication with other workers in the area or other workers who may be affected.</p>



Dangerous incident  
SinNot-2018/01666

A worker suffered minor burns when exiting a scraper after it caught fire. A hired scraper was treating wet roads when a suspected hydraulic hose failed and started the fire. The engines automatically shut down and flames grew around the cab. The operator suffered burns to his hand when pushing the cabin door open, so he could jump free. The fire suppression system was activated from the ground and a hand-held extinguisher was used to extinguish the remaining flames. Heat caused damage to the engine bay and inside the cab.

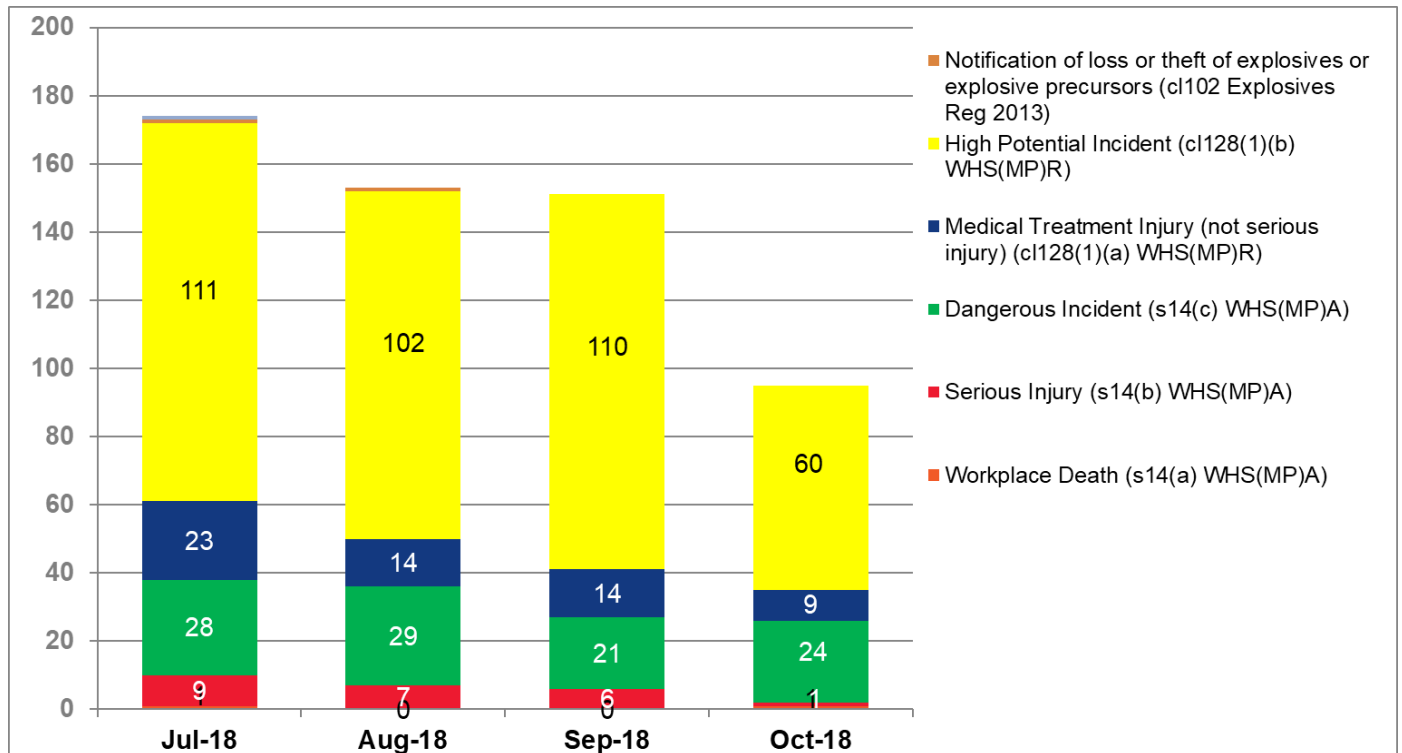


Mines must control the risk of fires being started or fuelled by plant.

Mines must ensure:

- adequate hose inspections are carried out on all hydraulic hoses near ignition points including those hard to access
- controls are in place to prevent liquid or atomised fuels from potential ignition sources
- exhaust lagging must be fit for purpose, be secure and provide full protection of the heat source.

Workers must be trained in the immediate response to fires on their mobile plant.



**Note:** While the majority of incidents are reported and recorded within a week of the event, some are notified outside this time period. The incidents in this report therefore have not necessarily occurred in a one week period. All newly recorded incidents, whatever the incident date, are reviewed by the Chief Inspector and senior staff each week. For more comprehensive statistical data refer to our annual performance measures reports.

### Disclaimer

The information contained in this publication is based on knowledge and understanding at the time of writing. However, because of advances in knowledge, users are reminded of the need to ensure that information on which they rely is up to date and to check the currency of the information with the appropriate officer of NSW Department of Planning and Environment or the user's independent advisor.

### Office use only

CM9 reference	DOC18/772724
Mine safety reference	ISR 18-39
Date published	18 October 2018